

AHTNA HERITAGE FOUNDATION ALASKA AVIATION HERITAGE MUSEUM ALASKA BOTANICAL GARDEN ALASKA CHALLENGER CENTER
FOR SPACE SCIENCE TECHNOLOGY ALASKA HERITAGE MUSEUM ALASKA HISTORICAL SOCIETY ALASKA HOMESTEAD AND HISTORICAL
MUSEUM ALASKA INDIAN ARTS ALASKA JEWISH MUSEUM ALASKA LIGHTHOUSE ASSOCIATION ALASKA MARITIME NWR VISITOR
CENTER ALASKA MASONIC LIBRARY AND MUSEUM FOUNDATION ALASKA MILITARY HERITAGE MUSEUM ALASKA MINING HALL OF
FAME FOUNDATION ALASKA MOVING IMAGE PRESERVATION ASSOCIATION ALASKA MUSEUM OF SCIENCE AND NATURE ALASKA
NATIONAL GUARD HISTORICAL HOLDING-MUSEUM ALASKA NATIVE HERITAGE CENTER ALASKA PUBLIC LANDS INFORMATION CENTER-
ANCHORAGE ALASKA REGIONAL CURATION CENTER ALASKA SEALIFE CENTER ALASKA STATE MUSEUM ALASKA TROOPER MUSEUM
ALASKA VETERANS MUSEUM ALASKA WILDLIFE CONSERVATION CENTER ALASKA ZOO ALEUTIAN WORLD WAR II NATIONAL
HISTORICAL PARK AND VISITOR CENTER ALFRED STARR NENANA CULTURE CENTER ALPINE HISTORICAL SOCIETY ALUTIIQ MUSEUM
AMERICAN BALD EAGLE FOUNDATION ANCHORAGE MUSEUM ANVIK HISTORICAL SOCIETY ARCTIC INTERAGENCY VISITOR CENTER
AUNT CLAUDIA'S DOLLS, A MUSEUM BEGICH, BOGGS VISITOR CENTER BERING LAND BRIDGE VISITOR CENTER BETTLES VISITOR
CENTER BIG DELTA STATE HISTORICAL PARK/ RIKAS ROADHOUSE BRISTOL BAY HISTORICAL SOCIETY CAMPBELL CREEK SCIENCE
CENTER CAPE DECISION LIGHTHOUSE SOCIETY CAPE ST ELIAS LIGHTKEEPERS ASSOCIATION CARRIE M. MCLAIN MEMORIAL MUSEUM
CHICKALOON VILLAGE TRADITIONAL COUNCIL CHIEF SHAKES TRIBAL HOUSE CHILKAT VALLEY HISTORICAL SOCIETY CHUGIAK-EAGLE
RIVER HISTORICAL SOCIETY CIRCLE DISTRICT HISTORICAL SOCIETY CLAUSEN MEMORIAL MUSEUM COOK INLET HISTORICAL SOCIETY
COOPER LANDING HISTORICAL SOCIETY & MUSEUM COPPER CENTER VISITOR CENTER COPPER VALLEY HISTORICAL SOCIETY/ GEORGE
ASHBY MEMORIAL MUSEUM CORDOVA HISTORICAL MUSEUM DELTA HISTORICAL SOCIETY & MUSEUM DENALI NATIONAL PARK AND
PRESERVE DOG MUSHING MUSEUM DOLLY'S HOUSE MUSEUM DUNCAN COTTAGE MUSEUM EAGLE HISTORICAL SOCIETY EAGLE
VISITOR CENTER ELFIN COVE MUSEUM EXCURSION INLET CANNERY MUSEUM FAIRBANKS CHILDREN'S MUSEUM FAIRBANKS
COMMUNITY MUSEUM FAIRBANKS PIONEER MUSEUM

FORT ABERCROMBIE STATE HISTORICAL PARK
FOUNTAINHEAD ANTIQUE AUTO MUSEUM FRIENDS OF
CREAMER'S FIELD FRIENDS OF THE NIKE SITE SUMMIT
GASTINEAU CHANNEL HISTORICAL SOCIETY
GEORGESON BOTANICAL GARDEN GUSTAVUS
HISTORICAL ARCHIVES AND ANTIQUITIES HAMMER
MUSEUM HOPE AND SUNRISE HISTORICAL SOCIETY
HUNA HERITAGE FOUNDATION HYDER COMMUNITY
ASSOCIATION IDITAROD TRAIL SLED DOG RACE
HEADQUARTERS ILANKA CULTURAL CENTER

INDEPENDENCE MINE STATE HISTORICAL PARK INTERNATIONAL GALLERY OF CONTEMPORARY ARTS INUPIAT HERITAGE CENTER
JENSEN-OLSON ARBORETUM JILKAAT KWAAN HERITAGE CENTER JUNEAU DOUGLAS CITY MUSEUM KASILOF REGIONAL HISTORICAL
ASSOCIATION KATIRVIK CULTURAL CENTER KATMAI NATIONAL PARK AND PRESERVE K'BEQ INTERPRETIVE SITE KENAI FJORDS
NATIONAL PARK HEADQUARTERS KENAI HISTORICAL SOCIETY KENAI NATIONAL WILDLIFE REFUGE VISITOR CENTER KENNECOTT
VISITOR CENTER KETCHIKAN MUSEUMS KING SALMON VISITOR CENTER KITTY HENSLEY HOUSE MUSEUM KLONDIKE GOLD RUSH
NATIONAL HISTORICAL PARK KODIAK HISTORY MUSEUM KODIAK MARITIME MUSEUM KODIAK MILITARY HISTORY MUSEUM KODIAK
NATIONAL WILDLIFE REFUGE VISITOR CENTER LAKE CLARK NATIONAL PARK AND PRESERVE LAST CHANCE MINING MUSEUM LORING
CANNERY MUSEUM MARIE DRAKE PLANETARIUM MAXINE & JESSE WHITNEY MUSEUM MCCARTHY-KENNICOTT HISTORICAL MUSEUM
MENDENHALL GLACIER VISITOR CENTER MORRIS THOMPSON VISITOR CENTER MUSEUM OF ALASKA TRANSPORTATION AND INDUSTRY
MUSEUM OF THE ALEUTIANS MUSEUM OF THE NORTH MUSEUMS ALASKA MUSK OX FARM & MUSEUM NOLAN CENTER
NORTHWEST ARCTIC HERITAGE CENTER NUNALLEQ CULTURE AND ARCHAEOLOGY CENTER ORGANIZED VILLAGE OF KAKE OSCAR
ANDERSON HOUSE PALMER HISTORICAL SOCIETY PALMER MUSEUM OF HISTORY AND ART PIONEER AIR MUSEUM PIONEER
MUSEUM FAIRBANKS PIONEERS OF ALASKA PORT ALEXANDER MUSEUM/ HISTORICAL SOCIETY PORT GRAHAM MUSEUM PRATT
MUSEUM RESURRECTION BAY HISTORICAL SOCIETY ROUNDHOUSE AT ALYESKA MUSEUM SAMUEL FOX MUSEUM SEALASKA
HERITAGE INSTITUTE SELDOVIA MUSEUM SEWARD MUSEUM AND LIBRARY SHELDON JACKSON MUSEUM SHELDON MUSEUM AND
CULTURAL CENTER SIMON PANEAK MEMORIAL MUSEUM SITKA HISTORICAL SOCIETY & MUSEUM SITKA MARITIME HISTORICAL
SOCIETY SITKA NATIONAL HISTORICAL PARK SITKA SOUND SCIENCE CENTER SKAGWAY HISTORICAL MUSEUM & ARCHIVES

SOLDOTNA HISTORICAL SOCIETY & MUSEUM SOUTHEAST
ALASKA DISCOVERY CENTER SULLIVAN ROADHOUSE
HISTORICAL MUSEUM TALKEETNA HISTORICAL SOCIETY
TANADGUSIX MUSEUM TANANA VALLEY RAILROAD
MUSEUM TANANA YUKON HISTORICAL SOCIETY (JAMES
WICKERSHAM HOUSE) TENAKEE HISTORY MUSEUM
TOCHAK HISTORICAL SOCIETY/ MCGRATH MUSEUM

TOGIAK PUBLIC LIBRARY AND CULTURAL CENTER TOK VISITOR CENTER (ALASKA PUBLIC LANDS INFORMATION CENTER) TONGASS
HISTORICAL SOCIETY TOTEM BITE STATE HISTORICAL PARK TOTEM HERITAGE CENTER TRAPPER CREEK MUSEUM TREADWELL
HISTORIC PRESERVATION & RESTORATION SOCIETY VALDEZ MUSEUM AND HISTORICAL ARCHIVE ASSOCIATION WASILLA MUSEUM AND
VISITOR CENTER WASILLA-KNIK HISTORICAL SOCIETY WESTERN ARCTIC NATIONAL PARKLANDS WHITTIER MUSEUM ASSOCIATION/
PRINCE WILLIAM SOUND MUSEUM WICKERSHAM HOUSE MUSEUM WICKERSHAM STATE HISTORIC SITE WILLOW HISTORICAL AND
WILDLIFE FOUNDATION WRANGELL-ST. ELIAS NATIONAL PARK AND PRESERVE YAKUTAT TRIBAL COUNCIL YUPIIT PICIRYARAIT MUSEUM

annual report 2021



MUSEUMS ALASKA

STRENGTHENING MUSEUMS ACROSS ALASKA

ABOUT MUSEUMS ALASKA

MISSION

Museums Alaska supports museums and cultural centers in Alaska and enhances public understanding of their value.

WHAT WE DO

Museums Alaska is a statewide professional association that strengthens museums and cultural centers and enhances public understanding of their value through training, networking, professional development opportunities, grant programs, and advocacy.

The organization began as a committee of the Alaska Historical Society in the late 1970s and became a non-profit organization [501(c)(3)] in 1983. Over the past four decades, Museums Alaska has steadily strengthened its operations and services and in 2020 hired its first full-time director to further grow the organization.

To advance its mission, Museums Alaska acts as a clearinghouse for information about Alaska's cultural institutions and their activities, advocates for museums at the state and national levels, develops opportunities and resources for professional education, and maintains an innovative grant program in partnership with Rasmuson Foundation.

FROM OUR PRESIDENTS

MONICA GARCIA-ITCHOAK (JAN-APRIL)

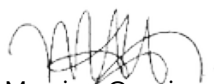
It's been two years plus of living and working with and through a pandemic. For many Alaskans, it has been a time of anxiety, illness, and shutdowns with no clear plan in place. Museums were no different – this was and still is uncharted territory. Resiliency and finding the silver lining became the new normal for most museums across the state. This moment certainly felt different when we began to re-open our doors this past year.

Museums from across the state were having difficult conversations – with staff, their boards, members, communities, and national professionals. Did the pandemic change museums forever? I believe we grew, navigated, discovered, innovated, and survived – some better than others, but we stuck together through ongoing support as a community of professionals. As a board at Museums Alaska, we had staff and board turnover, memberships and programs on hold, and an opportunity to think differently about our future. We survived through it all, but as an organization, we thrived.

As board members and as the past President, we got to work. The board conducted a six-month nationwide search for our next Director to lead the organization, landing Dixie Clough. Without a blink, working remote from Florida, she took hold of the mission and started moving us forward; with Dixie's partnership, the organization secured a program renewal grant with the Rasmuson Foundation while pivoting programming and outreach online. We didn't skip a beat keeping our members at the forefront during constant transitions.

In looking back, we stayed true to our core values, starting with small experiments with radical intent through the Cynfin framework. Innovation comes when you let go. It has been an honor serving on the board of Museums Alaska. I hope to see you in September in Valdez!

Warmest regards,



Monica Garcia – Itchoak
President 2020 – 2021

In 2021, Museums Alaska was lucky enough to have two dedicated board members as President: Monica Garcia-Itchoak and Amy Phillips-Chan. Monica began a new job in April and had to step down as our President, which is when Amy stepped up to serve.

We would like to thank both of them for their wonderful service!

FROM OUR PRESIDENTS

AMY PHILLIPS-CHAN (APRIL-DEC)

Adaptation. Perhaps this word captures the spirit of 2021 for many of us as we determinedly faced the new normal of shifting landscapes at home, work, and in our communities. For Museums Alaska, 2021 also represented a year of adjustment, renewal, and growth.

In April, Museums Alaska welcomed Dixie Clough as Director who quickly leaned into guiding our organization's daily operations and nurturing relationships within the Alaska museum community. The Collections Management Fund and Art Acquisition Fund programs relaunched in May with generous support from the Rasmuson Foundation and awarded \$337,362 in 2021 to 27 organizations for projects that strengthen internal capacity and enhance community engagement.

Museums Alaska responded to the need for increased digital connectivity with its first online conference in September. The virtual gathering known as #MA2021 brought together 250 attendees from 29 states and 13 countries. Participants engaged in four days of interactive conversations and workshops with topics related to organizational resilience, community partnerships, and pursuing collaborative history during a pandemic. In addition to advocating for economic sustainability, the museum field continues to respond to a pivotal cultural moment in our country and participate in the debate about cultural authority, equity, and inclusion.

In October, Museums Alaska and the Alaska museum community issued a statement of solidarity in support of the Alaska Jewish Museum (AJM) following attacks of anti-Semitic vandalism at the AJM. Forty-four organizations signed on to the statement, which was picked up and further disseminated by the Anchorage Daily News, Israel National News, and others.

An exciting announcement arrived in November that Museums Alaska's long-term partner and museum champion Rasmuson Foundation fully funded our Tier 2 three-year grant (2022-2024) in the amount of \$1,340,000. This continued partnership with Rasmuson will be invaluable for moving Museums Alaska forward and growing our capacity to strengthen Alaska's arts and culture organizations.

The year came to a cheerful close in December with a seasonal celebration that welcomed in new board members and applauded those stepping down who have committed their skills and passion over the past few years to making our organization stronger. My sincerest appreciation for your support during my term as President. I stepped into this role benefitting from the good work done before me and am leaving knowing that a great team will continue to lead Museums Alaska forward in innovative new directions.

Warmly,



Amy Phillips-Chan, PhD
President, 2021

WE HAVE A NEW DIRECTOR!



DIXIE CLOUGH

When I began looking for a new challenge after working at a local arts agency and arts center in Florida, I wasn't entirely sure what I wanted to do. When I saw the job opening for Museums Alaska, I was sold! I'm lucky that Museums Alaska was sold on me, too. I began the job in April, moved to Alaska in June, and have thoroughly enjoyed both the job and the state in the months since.



Before I began, I was told that the Alaska museum community was an amazing group of people—welcoming, passionate about their jobs, and generous with their time and expertise. After touring several museums across the state, I have to concur. I've been very inspired by my visits and hearing about everyone's programs and plans. I look forward to visiting more museums in the 2022 and meeting more of the community.

As for Museums Alaska, I've only been the director for a few months, but I have been so impressed with the work that Della and the board completed over the past few years to set up Museums Alaska for success. I hope to build on their amazing work and continue to grow the organization so we can better meet the needs of Alaska's museums and cultural organizations.



I know I say this all the time, but it's true. My door is always open,

A handwritten signature of Dixie Clough in black ink.

BACKGROUND

Education

McDaniel College - 2003 - BA - English major, History and Writing minors

George Washington University - 2011 - MA - Museum Studies - Administration

Select Experience

American Alliance of Museums - Professional Development Intern and Conference Registration Assistant

Media & Technology Committee - AAM - MUSE Awards and Conference Session Coordinator

Smithsonian Institution - Collections Volunteer, SITES Contractor, Mobile App Contractor, Digital Philanthropy Project Manager

Bay Arts Alliance - Director of Communications & Co-Manager of the Panama City Center for the Arts

BOARD OF DIRECTORS



Serving on the Board offers an incredible opportunity to partner with colleagues and help to make a meaningful impact on the funding, programs, and activities available for Alaska's cultural institutions.

Amy Phillips-Chan
PRESIDENT

Director, Carrie M. McLain Memorial Museum



Museums help us reflect on our past, think creatively about teaching and learning, and expose us to new ways of looking at our environment and place. Our role is to leave the mission better than when we found it. Today, Museums Alaska is a dot-connector providing essential resources to museums and cultural centers across the state. Museums matter.

Monica Garcia-Itchoak
Program Officer, Rasmuson Foundation



There are so many ways Alaska's museums can help each other. It's been rewarding to make connections, address challenges, and support work across the state.

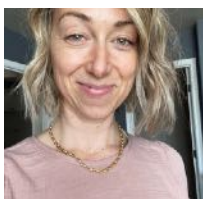
Amy Steffian
VICE PRESIDENT

Chief Curator, Alutiiq Museum & Archaeological Repository



I am honored to have the opportunity to engage with and serve as a voice for those in our industry so that we may continue to cultivate a stronger and healthier historical and cultural heritage community within the state of Alaska.

Selena Ortega-Chiolero
SECRETARY
Museum Specialist, Nay'dini'aa Na'Kayax
Chickaloon Village Traditional Council



I enjoy working to support Museum Alaska's innovative vision for cultural centers in our state. Expanding access to resources for both Museums Alaska and those it serves is a priority for me, along with expanding services for all types of museum professionals.

Sarah Harrington
TREASURER
Director, Kodiak History Museum



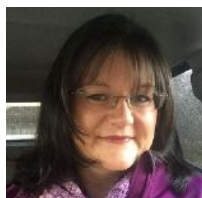
I enjoy being connected with Alaska's hugely diverse museum community, and seeing the collective impact of its professional resources and opportunities for museums.

Scott Bartlett
Executive Director, Homer Council on the Arts



I love the work that Museums Alaska does to support museums and cultural centers around the state and I love that we provide a place for connection and discussion with colleagues and friends. I'm honored to serve as a board member.

Sarah Asper-Smith
Developer and Designer, ExhibitAK



I am thankful for the opportunity to serve Alaska's museums. Connecting our museums and cultural institutions to the broader museum community and funding is a strength of Museums Alaska. Sharing Alaska's unique identity through our cultural institutions is my favorite part of being a board member.

Bethany Buckingham Follett
Curator, Wasilla Museums and Visitor Center



It has been a privilege to be on the Museums Alaska Board working with such a dedicated and passionate group of professionals to help connect, share knowledge and support the diverse cultural institutions within Alaska.

Sarah Owens
Conservator, Interwoven Fibers

In 2021, three new board members were elected by the Museums Alaska membership to replace those stepping down: Amy Phillips-Chan, Amy Steffian, and Monica Garcia-Itchoak. Patricia Relay, Kelly Gwynn, and Betany Porter will join the board in 2022.

ART ACQUISITION FUND (AAF)

In 2003, Rasmuson Foundation and Museums Alaska began a partnership to assist museums with acquiring artwork by living Alaska artists through the Art Acquisition Fund (AAF). The AAF has allowed museums across the state to acquire over a thousand works that tell 21st century Alaskan stories while stimulating local arts economies.

ROUND 1 - \$88,950

- \$35,000 - The **Alutiiq Museum** acquired *The Messenger*—a giant, bronze Alutiiq mask created by renowned artist, Perry Eaton.
- \$6,800 - The **Carrie M. McLain Memorial Museum** acquired one hundred tiny artworks from the series *Hair Portraits*, by Sonya Kelliher-Combs, and a painting by Ryder Erickson, *In Vain He Chases Ravens*.
- \$11,300 - The **Anchorage Museum** acquired a set of photographs by Jovell Rennie, and commissioned a painting by Linda Infante Lyons.
- \$13,000 - The **Ilanka Cultural Center** acquired two paintings by David Pettibone, *Open for Business* and *Study for Harvest*.
- \$850 - The **Clausen Memorial Museum** acquired *Le Conte Ice Fall*, a photograph by David Beebe.
- \$22,000 - **Sealaska Heritage Institute** commissioned a modern sea otter jacket and hat set from Robert Miller.

ROUND 2 - \$77,775

- \$8,500 - The **Haines Sheldon Museum** acquired *Troller*, a guitar created by local artist Rob Goldberg.
- \$6,250 - The **Sitka Historical Society** acquired an Aleut/Alutiiq open crown hunting visor and throwing dart set created by Peter Lind, Sr.
- \$17,000 - The **Alaska State Museum** acquired a traditional Spruce Root Hat created by the family of Delores Churchill.
- \$3,700 - **Sealaska Heritage Institute** commissioned an octopus bag from Jill Kaasteen Meserve.
- \$18,900 - **Ketchikan Museums** commissioned five stained glass windows from Terry Leberman.
- \$675 - **Kodiak Historical Society** acquired *Across Blue Seas*, a beaded necklace and earrings set from Mary Jane Longrich.
- \$4,500 - **Alaska Native Heritage Center** acquired *Credible* by Sonya Kelliher-Combs.
- \$7,000 - The **Alaska State Museum** acquired *Out Late Again, I See*, a contemporary diorama by Mitch Watley.
- \$11,250 - The **Alaska Aviation Museum** commissioned three paintings by John Hume.

COLLECTIONS MANAGEMENT FUND (CMF)

Museums Alaska and Rasmuson Foundation partnered again in 2013 to develop the Collections Management Fund (CMF) to provide museums with essential support for collections care projects ranging from documentation and conservation to storage

ROUND 1 - \$107,577.10

- \$7,407 - The **Alaska Jewish Museum** will upgrade their website for virtual programming and exhibits.
- \$15,000 - An expert consultant will help the **Alaska State Museum** make decisions about their aviation collection.
- \$14,970.10 - The **Alutiiq Museum** will translate a Fortran catalog, correct records, and update storage of their Nunakakhnak collection.
- \$5,105 - The **Cordova Historical Society** will digitize of 58 rolls of local newspapers.
- \$13,412 - The **Juneau-Douglas City Museum** will clean and prepare the Wooshkeetaan Kootéeyaa before it's re-housed at the State Office Building.
- \$15,000 - **Ketchikan Museums** will digitize unstable analog media in their collection.
- \$13,395 - The **Museum of the Aleutians** will improve preventative cleaning measures and upgrade storage mounts.
- \$8,870 - **Preservation Alaska** will upgrade their collections database and improve their records at the Oscar Anderson House Museum.
- \$14,418 - The **Talkeetna Historical Society** will identify and label found-in-collections items, settle old loans, properly house objects, and rehouse the Robb collection.

ROUND 2 - \$63,060

- \$3,465 - The **Pioneer Air Museum** will purchase custom-made bookshelf covers to protect collection objects stored on open shelves.
- \$13,390 - The **Palmer Museum of History and Art** will purchase a Bookeye book scanner for digitizing their collections.
- \$12,325 - The **Hammer Museum** will purchase Lantern devices and create a museum audio tour.
- \$8,149 - The **Haines Sheldon Museum** will rehouse and reorganize archival collections and digitize photographs.
- \$5,220 - The **Resurrection Bay Historical Society** will hire a conservator to clean, repair, and remount their 1974 Iditarod Race Mukluks and train staff on care of clothing and fiber-based collections.
- \$7,056 - **Alaska Aviation Museum** will begin a full inventory of their collection and update important collections procedure documents in the process.
- \$9,905 - **Sealaska Heritage Institute** will contract with a conservator and storage mount-maker to complete work on new collection items and train staff.
- \$3,550 - **Alaska Botanical Gardens** will train staff in collections care and create collections care and cataloging policies.

SOLIDARITY WITH THE ALASKA JEWISH MUSEUM

The Alaska Jewish Museum experienced two attacks of anti-Semitic vandalism in 2021—one in May and one in September. In both attacks, Alaska Jewish Museum Director Leslie Fried arrived at work to find swastika stickers on the museum doors. In the second attack, not only were swastika stickers stuck to the doors, but the swastika was carved into the door so the symbol would remain after the stickers were removed.

Dixie Clough, the director of Museums Alaska attended the Alaska Jewish Campus' community solidarity event and Torah Dedication Ceremony in an act of solidarity after the first attack, but when the museum was attacked again a few months later, Museums Alaska turned to the larger museum community for support.

As a result of suggestions from an open meeting with the Alaska museum community, Museums Alaska wrote a statement of solidarity (see next page) and opened it to signatures from museums and related organizations across the state.

The statement of solidarity was published in papers across the state, country, and in Jerusalem. Our related Facebook post was shared over 50 times by the museum community and its supporters.

We also wrote and published an op-ed in the Anchorage Daily News about the worrying movement of antisemitism in the city and its connection to attacks like those on the Alaska Jewish Museum.

We are now working on a policy document that will allow us to respond more quickly and mobilize the community more effectively in the future.

**Over 40 museums,
cultural centers,
and related
organizations
signed the
statement of
solidarity.**

THE STATEMENT

Museums Alaska and the Alaska museum community stand in support of the Alaska Jewish Museum and its mission to provide a home for Jewish history, art, and culture in Alaska.

We are deeply disturbed by the recent attacks of antisemitic vandalism that the Alaska Jewish Museum has experienced in Anchorage. Curator Leslie Fried has twice found swastika stickers stuck to the museum doors and windows and in the second incident, a swastika was gouged through a sticker into a door.

Museums Alaska, Alaskan museums, and museum staff members across the state stand in solidarity with Curator Leslie Fried, the Alaska Jewish Museum, and the Alaska Jewish Campus—offering support as the museum seeks to address these crimes and ensure the safety of its facilities and community.

This vandalism is an attack on all of us and the inclusive Alaska history our institutions were founded to tell. History reveals that malicious acts increase during uncertain times, and they flourish when encouraged or ignored by people in leadership positions. We will not ignore this spiteful act and we will work with the Alaska Jewish Museum to combat bigotry and prejudice in all its forms.

Education is one of the most important tools we can use to end hate crimes. Alaska's museums are institutions of lifelong learning and we are well-positioned to share information about the diverse communities that contribute to the cultural and social richness of our state.

Museums across Alaska encourage our communities to recognize that diversity is a strength and to learn about the vibrant cultures and resourceful individuals that have shaped Alaska. And we will continue to strive to reach community members we don't know with our programming because it is those individuals and groups who may benefit the most from respectful dialogue about Alaska's history and peoples.

Together we stand steadfast in our support of the Alaska Jewish Museum and affirm our intent to combat acts of hate against our museum community.

Alaska Aviation Museum
Alaska Botanical Garden
Alaska Emerging Museum
Professionals Chapter
Alaska Humanities Forum
Alaska Jewish Museum
Alaska State Museums:
Alaska State Museum, Juneau &
Sheldon Jackson Museum
Alaska Veterans Museum
Alpine Historical Society
Alutiiq Museum
American Bald Eagle Foundation
Anchorage Museum
Aunt Claudia's Dolls, a Museum
Carrie M. McLain Memorial
Museum
CATPAW - CJ Jones

Chickaloon Village Traditional
Council
Chilkat Valley Historical Society
Clausen Memorial Museum
Cordova Historical Museum
ExhibitAK
Fairbanks Children's Museum
Fairbanks Community / Dog
Mushing Museum
Friends of Sheldon Jackson
Museum
Haines Sheldon Museum
Homer Council on the Arts
Hope and Sunrise Historical and
Mining Museum
Juneau-Douglas City Museum
Kawerak Katirvik Cultural Center
Ketchikan Museums

Kodiak History Museum
Little Lithuanian Museum & Library
Museum of Alaska Transportation
and Industry
Museum of the Aleutians
Palmer Museum of History and Art
Pioneer Air Museum
Pratt Museum & Park
Preservation Alaska
Resurrection Bay Historical Society
Sealaska Heritage Institute
Talkeetna Historical Society and
Museum
Thole Exhibits And Mounts (TEAM)
University of Alaska Museum of the
North
Valdez Museum and Historical
Archive



VIRTUAL PROGRAMS

When COVID hit, we knew that our museum community needed opportunities to connect to share experiences and advice, so last year, we began two new, monthly online networking opportunities—Museum Networking and the Advocacy Roundtable.

Because our state is so large and many of our museums are in rural communities off of the road system, this networking opportunity became an invaluable tool for our museum community to feel more connected—beyond the needs of communication during COVID.

In addition to continuing our Museum Networking and Advocacy Roundtable sessions, this year we also added a monthly networking sessions for emerging museum professionals and hosted our annual conference online.

We are excited to keep improving and building on these online opportunities in the future to make sure they continue to meet the needs of Alaska's museums.



ZOOMING TOGETHER

MUSEUM NETWORKING

A monthly conversation between museum colleagues across the state. The conversations are lead by the participants and this year, ranged from reopening procedures, online auctions, programming, and more!

ADVOCACY ROUNDTABLE

A monthly roundtable about advocacy issues. Attendees discuss the latest statewide, national, or local issues that need advocacy and help each other with messaging and other advocacy needs.

EMERGING MUSEUM PROFESSIONALS (EMPs) MEETUPS

A monthly meetup for attendees in their first ten years of working in the museum field. Ashley Bivin, the new chair of the Alaska chapter of the National EMP Network, helped organize and lead these virtual meetups, which began in September during the annual conference.

SUSTAINABILITY: ADAPTATION AND RESILIENCE OF ALASKA MUSEUMS

#MA2021

Museums Alaska held its 2021 Annual Conference from September 13-14 & 20-21 as a virtual conference via Whova. The theme of this year's conference was

Sustainability: Adaptation and Resilience of Alaska Museums.

The conference included four workshops, four guided conversations, three evening events, and two keynotes: one by Dr. Benjamin Filene, Curator at the National Museum of American History, and one by Emily Edenshaw, CEO and President of the Alaska Native Heritage Center.

Thanks to a generous \$15,000 sponsorship from Rasmuson Foundation, Museums Alaska was able to offer the conference free of charge to all attendees.

The conference was planned by a group of Museums Alaska board members and Alaska museum community members. We would like to extend our gratitude to everyone who helped!

PROGRAMMING COMMITTEE

Amy Phillips-Chan
Dixie Clough
Monica Shah
Sarah Asper-Smith
Scott Bartlett
Anjuli Grantham

Niko Sanguinetti
Cindi Lagoudakis
Janet Northey
Angela Linn
Bethany Buckingham Follett
Selena Ortega-Chiolero

We were delighted to welcome over one hundred attendees to this year's virtual conference. The majority of our registrants were from Alaska, but we also had conference registrants from 28 other states and several different countries!

Attendees shared over 100 photos, exchanged over 350 messages, and wrote more than 700 posts on the Whova community board. Thirty-one people even connected outside of the planned sessions for virtual meetups during the conference.

With six sessions, four workshops, three events, and two keynote talks spread out over four days, over 400 hours of content were watched live by our attendees.

Our most popular session was "Unlearning Best Practices to Build Relationships—a panel presentation on building stronger relationships with Native Tribes through collections care practices and community outreach. The panel featured April Laktonen Counciller, PhD, from the Alutiiq Museum, Steve Henrickson from the Alaska State Museum, Dr. Kim Christen from the University of Washington, Terry Snowball from the National Museum of the American Indian, and Brandon Castle from the Tongass National Forest. They each discussed a project or program that may seem to be counter to "traditional" best practices for collections care and management, but in fact, improve an organizations ability to care for, share, and protect the collections in their care, while meeting the needs of the Native Tribes to whom those collections originate and belong.

Overall, attendees enjoyed our first virtual conference, but did have some suggestions for improvement. Most were content-related suggestions, but some were related to logistics, including having an in-person component to the conference, which we will address next year by hosting a hybrid conference in Valdez and online. It was also suggested that we include more time to questions and discussions, which we also plan to do in the future.

The keynote presentations and sessions were all recorded and can be found on our [YouTube channel](#) and the [#MA2021 Conference page](#) on the Museums Alaska website.

4

Workshops

6

Sessions

18

Speakers

137

Participants

741

Discussion Posts

#MA2021 AWARDS

Every year at our annual conference, we recognize individuals who have gone above and beyond in their dedication to museums.

This year, we honored four amazing individuals who have improved museums across Alaska by dedicating their time, money, and passion for teaching.

Award for Excellence in the Museum Field: Dawn Biddison



Dawn Biddison is a Museum Specialist at the Smithsonian Arctic Studies Center based at the Anchorage Museum. She has been instrumental in the success of the *Material Traditions* program by working extensively with the artists and community to organize, conduct, and video-document Alaska Native material gathering and processing events.

President's Award in Honor of Lifetime Achievement: Elaine Kingeekuk



Elaine Kingeekuk has been sharing her knowledge about skin sewing with students, artists, and museums for over 30 years. Ms. Kingeekuk was born and raised in Savoonga and comes from a long line of St. Lawrence Island Yupik artists. Through her commitment to passing on St. Lawrence Island Yupik culture and heritage, Elaine Kingeekuk has left an incredible legacy of historic preservation along with the knowledge and skills needed to transform marine mammals into clothing and art which might otherwise have been lost.

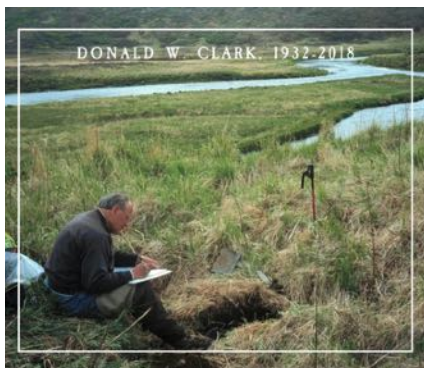
#MA2021 AWARDS

The Award for Excellence celebrates exceptional work in the field, the Volunteer of the Year Award acknowledges the crucial roles volunteers perform in our museums, the Museum Champion Award recognizes outstanding museum donors, funders, or contributors, and the President's Award in Honor of Lifetime Achievement recognizes the contributions of an individual over a career.



Volunteer of the Year: Paul Gill

It is rare to find someone who understands the importance of the daily maintenance associated with caring for a National Historic Landmark. From putting up storm windows to moving furniture and taking out recycling, Paul contributed over 40 volunteer hours with the Kodiak History Museum in 2021, and often advocates for the museum when traveling.



Museum Champion: Dr. Donald W. Clark

Raised in Kodiak, Dr. Donald Clark was a leader in studying the archipelago's history, and was locally known as the "father of Kodiak archaeology". In a final act of generosity, Clark left a total of \$2.45 million dollars to the Kodiak History Museum and the Alutiiq Museum in his estate. The funds represent a substantial portion of Clark's life savings and a major investment in sharing Kodiak's history with future generations.

GRANTS & DONORS

GRANTS AWARDED IN 2021

This year was busier than usual due to the generosity of the Alaska State Library in sharing their American Rescue Plan Act (ARPA) funds with the Alaska museum community. This was also the final year of our current Rasmuson Foundation Tier II grant, requiring us to submit a new Tier II application to continue our partnership.

RASMUSON FOUNDATION - Tier II Grant - \$1,340,000

Three years of funding beginning in 2022, for AAF & CMF grants, grant management, and education and outreach.

ARPA - Alaska Museums Internship Program - \$65,120

A partnership with the Alaska State Museum to pay for intern and intern housing stipends as well as administrative overhead to manage the funds.

ARPA - Cultural Competencies Program - \$50,292

A partnership between Museums Alaska and the First Alaskans Institute to create and host an online webinar and conversation series to help Reimagine Relationships Between Museums and Alaska's Indigenous Peoples.

ACF - Strengthening Organizations Grant - \$7,500

Funding for a strategic planning consultant and partial hotel room costs for a board retreat in Juneau.

A HUGE THANK YOU TO OUR DONORS!

Anonymous

Sarah Asper-Smith

Scott Bartlett

Heather Beggs

Dawn Biddison

Ashley Bivin

Mark Bondurant

Bethany Buckingham Follett

Annie Calkins

Rosemary Carlton

Hayley Chambers

Molly Conley

Terry Dickey and Wanda Chin

Sam Dinges

Mary Dooher

Addison Field

Monica Garcia-Itchoak

Sarah Harrington

Virginia Hatfield

Michael Hawfield

Sophie Lager

Cindi Lagoudakis

Anita Maxwell

Heather McClain

Jordan Miller

Mike Monterusso

Trish Neal

Selena Ortega-Chiolero

Sarah Owens

Amy Phillips-Chan

Sara Piasecki

Amy Steffian

MEMBERS

ORGANIZATIONS

Alaska Botanical Garden, Inc.
Alaska State Council on the Arts
Alaska State Museum
Alpine Historical Society
Alutiiq Heritage Foundation/Alutiiq Museum
American Bald Eagle Foundation
Anchorage Museum
Aunt Claudia's Dolls, a Museum
Bristol Bay Historical Society
Chickaloon Village Traditional Council
Clausen Memorial Museum
Cooper Landing Historical Society & Museum
Eagle Historical Society & Museums
Haines Sheldon Museum
Hammer Museum
Homer Society of Natural History, Inc.
Hope & Sunrise Historical Society/Hope & Sunrise Historical and Mining Museum
Juneau-Douglas City Museum
Ketchikan Museums
Klondike Gold Rush National Historical Park
Kodiak Maritime Museum
McCarthy-Kennicott Historical Museum
Museum of the Aleutians
Palmer Museum of History & Art
Pioneer Air Museum
Preservation Alaska
Resurrection Bay Historical Society
Sealaska Heritage Institute
Sitka Historical Society & Museum
Skagway Museum
Talkeetna Historical Society
Tanana Yukon Historical Society
Tenakee Historical Collection
UA Museum of the North
Valdez Museum & Historical Archive Association, Inc.
Wasilla Museum & Visitor Center
Whittier Museum Association
Willow Historic & Wildlife Foundation
Wrangell Museum
Wrangell-St. Elias National Park & Preserve

INDIVIDUALS

MUSE (\$500)

Karl Gurke
Donna Matthews

AFFILIATE (\$60)

Marilyn Knapp
Sarah Owens
Sara Piasecki
Monica Shah

STANDARD (\$40)

Kimberly Arthur
Sarah Asper-Smith
Rosemary Austin
Scott Bartlett
Laurie Berg
Nancy Bird
Savanna Bradley
Marina Briggs
Bethany Buckingham Follett
Christine Carpenter
Ellen Carrlee
Hayley Chambers
Patricia Chesbro
Molly Conley
Elizabeth Jane Cook
Francesca Du Brock
Patience Frederiksen
Andrew Goldstein
Anjuli Grantham
Kelly Gwynn
Michael Hawfield
Sara Hay

PATRON (\$100)

Heather Beggs
Bethany Follett
Monica Garcia-Itchoak
Sarah Harrington
Robert Banghart
Cynthia Jones
Amy Phillips-Chan
Melissa Schoenwether
Amy Steffian

Ron Inouye
Valarie Kingsland
Amanda Lancaster
Angela Linn
Heather McClain
Katie Myers
Patricia Neal
Janet Northey
Michael O'Meara
Selena Ortega-Chiolero
Patricia Partnow
Nicole Peters
Betany Porter
Cathy Sherman
Scott Shirar
Christine Smith
Rob Stapleton
Ann Stegina
Kailee Van Zile
Alice Watterson
Elana Yanusz

STUDENT (\$20)

Michael Hubert

**THANK YOU
ALL!**

INCOME

MAIN SOURCES OF REVENUE

\$414,820

GRANTS

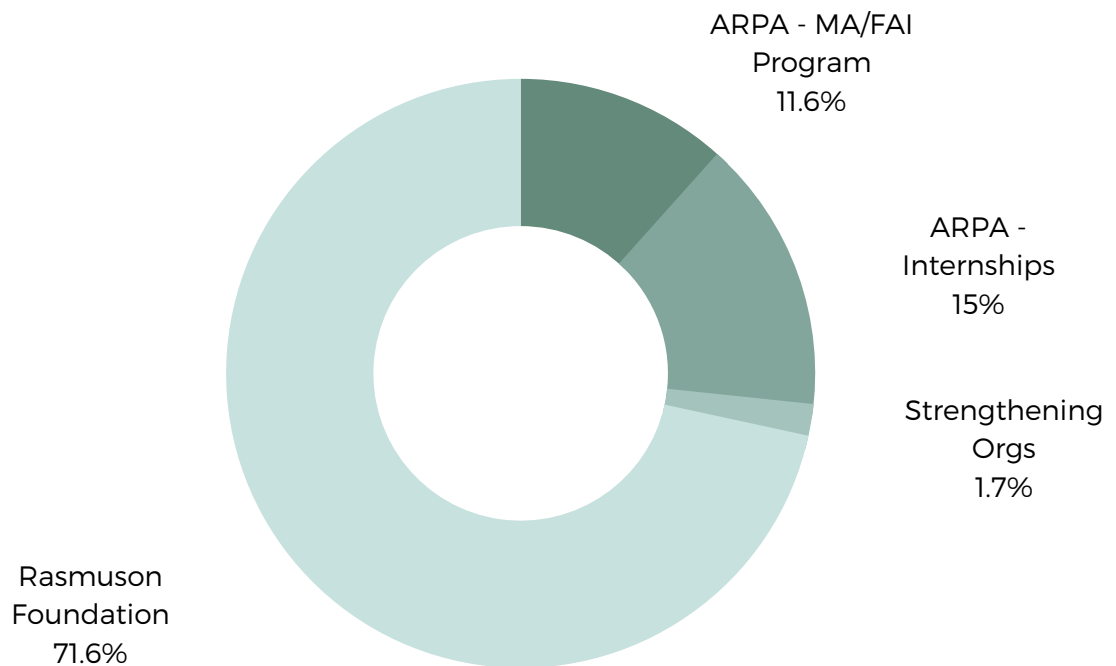
\$7,600

MEMBERSHIPS

\$4,129

DONATIONS

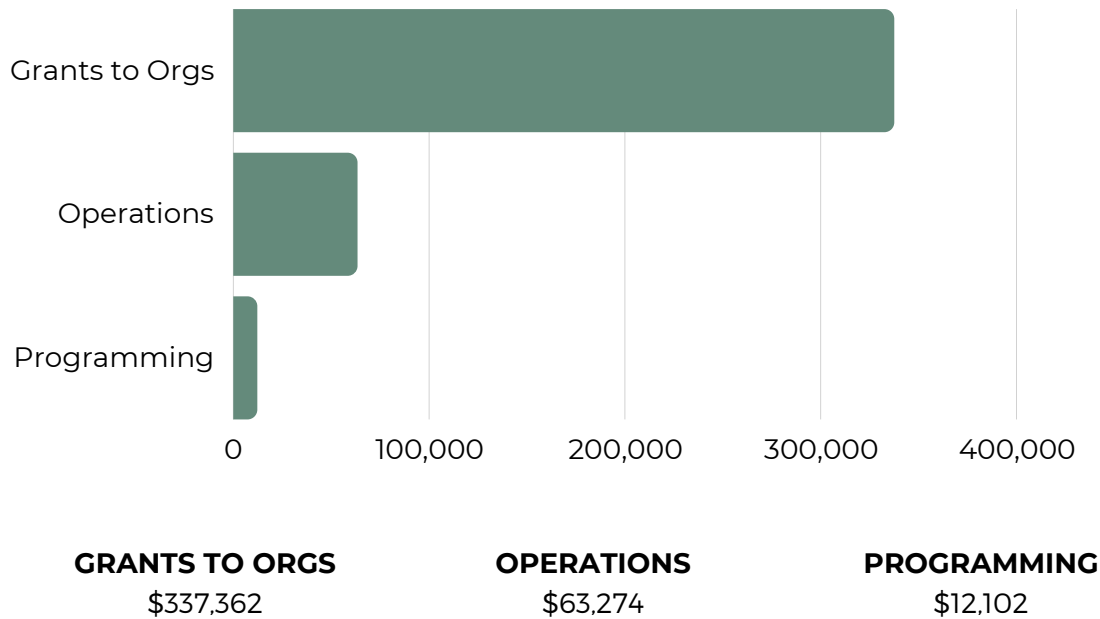
GRANTS BREAKDOWN



While we received these grants in 2021, we will use the majority of the funds from the ARPA grants and Strengthening Orgs grant in 2022. A portion of funding from our FY18-21 Rasmuson Foundation grant will also carry over into 2022.

EXPENSES

MAIN EXPENSES



MAIN OPERATING EXPENSES

60% PERSONNEL (\$37,844)

15% ACCOUNTING (\$9,674)

9.6% WEB & TECH (\$6,055)

Web & Tech expenses were higher than usual due to a two-year website renewal and upgrade. Business expenses, insurance, and variable expenses like supplies cost less than two percent each.

4

GRANTS
RECEIVED

32

GRANTS
GIVEN

99

MEMBERS

137

#MA2021
PARTICIPANTS

1

STAFF MEMBER

292

FACEBOOK
FOLLOWERS

28

NETWORKING
SESSIONS

1

ADVOCACY
MEETING

1

CONFERENCE

9

BOARD
MEMBERS

33

DONORS

268

NETWORKING EVENT
REGISTRANTS

8,327

FACEBOOK
REACH

374

EMAIL
SUBSCRIBERS

22

NEWSLETTERS

