

**NEW
ADDRESS:**

Museums Alaska

PO Box 3004

Homer, AK 99603

NEW EMAIL:

director@

museumsalaska.org

SAME PHONE:

(907)306.3409

**NEW WEB-
SITE AT
SAME URL:**

museumsalaska.org

**INSIDE
THIS ISSUE:**

XRF 2

Explained!

More news 4

Awards 6

Comings &
Goings 8

Customs 13
Guide

Conference 14
Info

Auction 18

Art Acquisition Fund 2012

The application deadline for the 2012 Art Acquisition Fund is **Friday July 30**. There is no letter of intent required this year (caps are no longer based on museum budgets), so get your applications in soon! Funds are to be used in the 2012 calendar year.

The purpose of the Art Acquisition Fund is to encourage museums in Alaska to collect the work of accomplished Alaska artists for their collections, and support living, practicing Alaska artists through these acquisitions.

The Fund is supported through a grant established by Rasmuson Foundation and is administered by Museums Alaska on behalf of the Foundation.

Eligibility:

1. Only Alaska museums and Alaska Native cultural centers are eligible to participate in the Art Acquisition Program. An institution's qualified auxiliary or support group may act as the agent for purchasing if it is impossible for the museum to do so directly.
2. A museum must be qualified under Section 501(c)3 of the IRS Code of 1986, and classified as (1) a public charity under Section 509(a) of the IRS Code or, (2) as a unit of government, in selected cases.
3. A museum must have a history or tradition of

collecting or exhibiting art, and be able to store and care for all works published.

4. To be eligible, a museum must submit a plan for the exhibition of works purchased through this program. This plan should indicate when and how works will be exhibited and how the museum will incorporate these works into its overall collections (e.g., as part of a permanent exhibition, educational programs, community exhibitions, etc.).

Funding Limits:

There are no set annual limits on purchases for each museum/culture center. However, no more than \$35,000 will be allocated to a single museum in the program year. The amount of artwork to be purchased should be guided by (1) the adopted collection policy, (2) the exhibitions/programs plan, and (3) capacity for maintaining and using collections in keeping with accepted museum standards.

Full guidelines and application forms are available at <http://museumsalaska.org/art-acquisition-fund/>

All questions and applications should be directed to Mike Hawfield at art@museumsalaska.org

Thanks to the Rasmuson Foundation for supporting this important program!



Ron Senungetuk, *Reindeer Herd*, carved and stained wood, 2003

UA Museum of the North



Museums Alaska
Executive Director,
Heather Beggs

*“Sitka boasts
twenty-four
attractions listed
on the National
Register of
Historic Places.”*

JOIN at
www.museumsalaska.org

Director's Note

Welcome to the Summer 2012 edition of the *Network*! We've had a short hiatus during the transition between directors, but I hope you enjoy the new look and all the wonderful contributions from your museum colleagues across the state.

I'm thrilled to be back in the museum community after a couple years abroad and look forward to reconnecting with many of you at the Sitka conference October 10-13. Conference information starts on page 14 and you can find more online at our new-and-improved website at www.museumsalaska.org as well as the Alaska Historical Society's website.

The Board and I would like to hear from you, our members — YOU have the best ideas and suggestions about how we can better serve you as an institution, seasoned or emerging professional, volunteer, or avid museum-goer. My virtual door is always open, so fire me an email or call with your idea — whether a kernel to be developed or something you've been nurturing for a while. I'm excited to get members involved more in our operations, from new initiative development to active committee participation or short-term project help.

Thank you for your continued support of our statewide museum association.

Join us in Sitka!

This year's conference is shaping up to be an experience you will not want to miss. Beautiful Sitka with its amazing natural, cultural, and historic offerings invites you to experience a magical place.

Nestled amongst the unparalleled natural splendor, Sitka boasts twenty-four attractions listed on the National Register of Historic Places. Learn about the ancestral home of the Kiksadi Tlingit Indians and delve into the rich heritage in the local museums housing rare archives and artifacts.

Take a guided tour of the grand historic Bishop's House and be transported to the Russian colonial era. Walk the site of the 1804 battlefield at Sitka National Historical Park or study the brightly painted totems along the coastal Totem Trail. Visit the Sitka Historical Museum and the Sheldon Jackson Museum...

...more conference information starting on page 14 of this newsletter.

Submitted by Sitka Historical Society & Museum

Renew your membership today!

Do you have your 2012 Membership Card? If not, JOIN ONLINE NOW!

Museums Alaska depends on member contributions to operate. Your support ensures that we are able to:

- * Deliver an annual conference full of professional development opportunities, including scholarships to attend;
- * Keep museums connected through *Network* and email
- * Advocate for museum issues statewide
- * Provide a listing of Alaska's Museums and resources



What is XRF & how does it apply to MY museum?



XRF demonstration at the Pratt Museum

Submitted by Angela Linn

Wikipedia explains that XRF (X-ray fluorescence) is “the emission of characteristic ‘secondary’ (or fluorescent) X-rays from a material that has been excited by bombarding with high-energy X-rays or gamma rays. The phenomenon is widely used for non-destructive elemental and chemical analysis, particularly in the investigation of metals, glass, ceramics, and building materials, and for research in geochemistry, forensic science, and archaeology.”

At this year’s Museums Alaska Conference in Sitka, a full-day workshop will be offered as an *Introduction to XRF*. The purpose of the Museums Alaska XRF workshop is to provide members with a basic working knowledge of the physics of X-ray fluorescence (XRF) and to demonstrate how this cutting edge technology can help improve collections care, collections management, and research in your institution.

X-ray fluorescence has applications to various museum fields including: Art Conservation, Anthropology, Archaeology, Geosciences, Chemistry, Physics and Material sciences. Participants will learn how to test museum collections for various contaminants and how to analyze the composition of archaeological artifacts. For example, using this technique, scientists in Fairbanks have determined the specific origin of obsidian used to make ancient tools. According to Josh Reuther, Senior Archaeologist at Northern Land Use Research, “XRF sourcing of obsidian has given us an unparalleled ability to understand the development of trade networks, and a greater appreciation of the connectedness of prehistoric populations in Alaska and regions far beyond.”

Learning is accomplished by hands-on analysis of materials that participants bring to the workshop. Workshop participants will be provided with software for spectral

Join the XRF Workshop! Improve collections care, collections management and research.

Portable XRF Spectrometer

The Alaska State Museum received a generous grant from the Rasmuson Foundation to purchase a Bruker portable X-Ray Fluorescent Spectrometer. This hand-held machine will be available for use throughout the state to perform non-destructive analysis of materials ranging from metals, to glass, ceramics and minerals. The XRF can help identify the various components of artifacts, perform pigment analysis on paintings, and identify pesticide residues on taxidermy and other artifacts. It will be available through ASM’s Museum Support Program.

museum objects. At <http://aaslhcommunity.org/nomenclature/> visitors can find a tutorial explaining the changes found in the third edition of this industry standard and keep up with the news on such issues as the lexicon’s adoption by software vendors. Users can also query experts about the proper name for an object, propose new terms, and find recent updates to the lexicon. Many of the people involved in the online community participated in the recent revision.

Nomenclature 3.0 launched

An online community has been established for users of *Nomenclature 3.0 for Museum Cataloging*, a hierarchically organized list of object terms used for the cataloging of human-made

What Is It?



Courtesy of The Strong, Rochester, New York

It’s a Donut Maker made by Popeil Brothers, Chicago, circa 1955.

—Tools & Equipment for Materials/Food Processing & Preparation T&E/Food Preparation Equipment/Shaper, Food/Mold, Food/ Mold, Doughnut

Have you checked out Nomenclature 3.0?

Nomenclature is a hierarchically organized list of object terms for museums that’s been an industry standard since 1978. The newest version is better than ever with over 5,000 new terms and a revised and enlarged hierarchical structure. Join the online community at <http://aaslhcommunity.org/nomenclature>. There you can watch a tutorial about the revision, ask questions, and propose new terms.

Nomenclature 3.0—We Name Names!

When Steel Meets Glass



Lens assembly ready for the final lift and landing

“You have to love it when the stars align and a plan comes together.”

-Norm Lagasse

Moving the Hichinbrook Island Lighthouse Lens at the Valdez Museum May 14-18. Story and photos submitted by Norm Lagasse.

In February I contacted Andrew Goldstein at the Valdez Museum to offer my assistance in moving the Hichinbrook Island Lighthouse Lens across the Egan Room of the museum. After several pictures, some skull storming and a little head scratching we devised a plan to affect the move.

So what is the recipe for moving a lighthouse lens exhibit that is 8 feet tall, 5 feet in diameter, weighs over 1600 pounds and it has to be lifted from the bottom? First you start by acquiring two 12-foot I-Beams and cutting one of those beams in half to make the flexible spine. You add 50' of combined 4" and 3-1/2" square steel tubing in the form of four telescoping legs. You roll in four very heavy-duty 8" steel casters for mobility. Drill, weld and bolt all of that together until you have a solid, adaptable, gantry crane. Once the metal has cooled you attach four 3-ton, long throw, hydraulic rams for the lifting muscle.

After the final equipment assembly work was completed Bob Banghart and I departed Anchorage in the UAV (urban assault vehicle, aka. Motorhome) towing a trailer loaded with gantry crane and modified pallet jack. We were on our way to Valdez to help the team at the museum move the Hichinbrook Island Lighthouse Lens.

Now for the actual big lift event we add four pinches of nylon strap, eight helpings of shackle, six cargo straps and four hybrid 1/2" eye-bolt-lag-screws. The last ingredient was acquired at a local Valdez hardware store where the staff took regular 6" long 1/2" eye-bolts, cut the heads off 1/2" x 4" lag screws and welded them together. A REAL hardware store with a REAL machine shop attached and a very, capable, savvy staff that understood exactly what we needed. You have to love it when the stars align and a plan comes together.

For the actual relocation we modified a wide pallet jack with some 1-1/8" plywood and four 5" heavy-duty casters to stabilize the lens assembly. After we got the lens assembly airborne we slid the pallet jack assembly under the lens and lowered it gently on the mobile base. The team exerted some muscle, mass and appropriate groans before the lens assembly started floating across the floor to its new location in front of the main entrance. One more lifting session via the gantry crane followed by a gentle let-down to landing and the Hichinbrook Island Lighthouse Lens exhibit was in its new home.

We started at 8:00am with clearing the gallery and finalizing the flight plan for the lens assembly. We wrapped up the crane loading and tie-down by 8:00pm that night with the lens in its new spot. This project developed into a fun challenge and with beautiful weather for a cross-country scenic drive it turned out to be a grand adventure.

UAV with “Big Lift” equipment trailer at a rest stop in Eureka



Crane wrapped around the lens and ready to be lowered onto the modified pallet jack. Bob multi-tasking while Tom looks on.



Sheldon Museum Opens New Story-Based Exhibits



Trails to Highways exhibit

um. This marks the end of a five-year effort to research and revitalize all of the museum's exhibits, many of which haven't been changed in over 20 years. The result is an open and airy museum with story-based exhibits that focus on interpretation of the history of the Chilkat Valley, using objects to enhance the interpretation. A number of fascinating but not relevant objects have been moved to a "visible storage" area in order to focus on the main mission of inter-

pretation. In addition a children's corner and an area for the display of local art from the museum's permanent collection were created.

Three Six-Week Spotlight art exhibitions will be hosted this year. These are juried solo and duo, with an occasional group, shows highlighting the work of Chilkat Valley artists. Carole Clifton's oil paintings opened on May 25th, Klukwan artists will open on July 13, and Tresham Gregg will complete the series with an opening on August 31st. More information at www.sheldonmuseum.org

"The result is an open and airy museum with story-based exhibits that focus on interpretation of the history of the Chilkat Valley."

Submitted by Jerrie Clarke

On May 18, the Sheldon Museum & Cultural Center celebrated International Museum Day with a reception for the opening of new permanent exhibits throughout the muse-

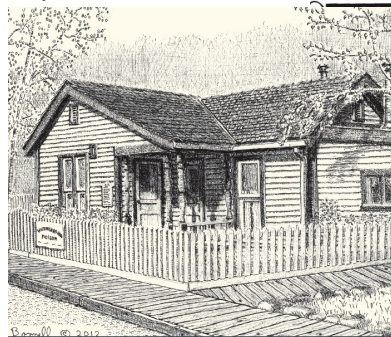
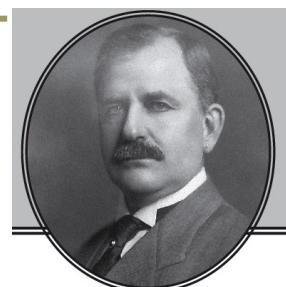
Happy 100th Birthday, Wickersham!

Submitted by Elizabeth Cook

Fairbanks is noting the 100th Anniversary of the Second Organic Act, which officially designated Alaska as a "Territory" and authorized the establishment of a Territorial Legislature. The Tanana Yukon Historical Society will hold a reception at the Wickersham House Museum in Pioneer Park on Saturday afternoon, August 25. August 24 was Wickersham's birthday and President Taft signed the Act into law on August 24, 1912.

As Alaska's Delegate, James Wickersham, voteless in the U.S. House of Representatives, worked hard to convince a skeptical Congress to pass legislation for Home Rule for Alaskans. He faced opposition from Wilds Richardson, cannery operators, and even President Taft. Four years later, in 1916, he was unsuccessful in his attempt to provide statehood. Territorial status did not give Alaskans as much control over Alaska's natural resources as Wickersham would have liked, but it was a major step in the development of Home Rule and remained

the form of government for Alaska through two World Wars until statehood became a reality.



SLAM Project Update

Submitted by Scott Carrlee

The governor and the legislature joined forces to add another \$49 million in funding for the project. This allows the project to move forward with the construction in a phased manner. The plan is to complete the bid process this summer and start construction in February of 2013. The three year building cycle puts occupancy at somewhere around spring of 2016.

<http://alaskalamp.blogspot.com/>



“Haakanson gives museums ideas for better, more meaningful cultural partnerships”

Alaskan museum and library professionals at the annual meeting of the ATALM, the Association of Tribal Archives, Libraries and Museums, June 2012, Tulsa, Oklahoma. Sven Haakanson, seated in front row, far left.



NETWORK

Congratulations!

The Alaska Native Heritage Center, Anchorage Museum, and Out North Contemporary Art House recently received ArtPlace Awards totaling \$744,960.

ArtPlace is a collaboration of 11 of the nation's top foundations including the Rasmuson Foundation, eight federal agencies including the NEA, and six of the nation's largest banks.

ArtPlace funds are focused on “creative place-making,” in which partners from public, private, nonprofit and community sectors strategically shape a place's physical and social character.

The ImagiNative Alaska Experience, a project of the Alaska Native Heritage Center, will rebrand Anchorage as a center of Native arts by embed-

ding it throughout the city through permanent and temporary interventions, including public art commissions, art markets, small business training, a roving Native Art cart and cultural flash mobs. Award = \$295,000

The Anchorage Museum's project, Northern Initiative, will bring together artists, scientists, historians, anthropologists and community. The Anchorage Museum will use art to spark conversation about how to leverage the distinctiveness of place and position Anchorage as a pivotal city in the Circumpolar North. Award = \$199,960

Out North Contemporary Art House will be a collaborative, dynamic community space where a dozen resident groups can create, present, produce, teach, and reach out through art, music, education and journalism to build community pride, resilience and resolve. Award = \$250,000

Sharing Alutiiq Heritage Globally

Submitted by Amy Steffian

What do the care of ancient Mesoamerican fabrics and the preservation of Alutiiq culture have in common? Native people. Last November, the Alutiiq Museum's Executive Director Sven Haakanson traveled to Oaxaca, Mexico as a guest of the 8th North American Textile Conservation Conference. A trip to Mexico to speak about Native Alaska may sound like a stretch, but the Alutiiq Museum's work was relevant to this professional gathering. Haakanson's presentation focused on the ways his community in not only preserves and shares heritage, but reawakens tradition with museum programs.

Every time he speaks at such a conference, Haakanson gives museums ideas for better, more meaningful cultural partnerships, whether they be with Native Alaskans or indigenous peoples of Central America. In the past year,

Haakanson also discussed heritage programming at lectures in Iceland, Hawaii, the Orkney Islands, and Oklahoma, and he will speak at Brown University's Haffenreffer Museum in the fall.

The long hours of travel and time away from family are difficult, but his global outreach has helped the Alutiiq Museum make important connections – to friends, funding, and ancestral collections.

"I'm always ask to see collections from Alaska where ever I go," said Haakanson. "Sometimes I find remarkable things. On a trip to Germany a few years ago, I saw a cormorant skin parka hanging with a collection from Mongolia. A little research in their files showed that it was actually collected from Alaska. I was able to help the museum identify this garment and to confirm that it was an Alutiiq item based on studies of similar clothing from Finland and Russia. Now we have pictures of the parka to share with artists here in Kodiak," said Haakanson.

On June 4th Haakanson's efforts at bridging cultures and continents to make collections more accessible to Native communities were recognizes with the Guardians of Culture and Life-ways Leadership Award from the Association of Tribal Libraries, Archives, and Museums. Established in 2007, the award recognizes organizations and individuals who serve as outstanding examples of how indigenous cultural organizations can contribute to the vitality and cultural sovereignty of Native nations.

State Funding Awarded



Alaska State Flag

Congratulations to Alaska museums who received State funding from the recent round of Grant-In-Aid awards through the Alaska State Museums, Operating Support grants through

the Alaska Stated Council on the Arts, and FY13 Capital Budget grants through the Legislature. Alaska's museums fared well, from large capital projects in Southeast, operating grants in Southcentral, and project grants from Cordova to Fairbanks and Eagle to Nome. We'll look forward to hearing about all your project successes!

Ross Merrill Award

The Alaska State Museum received the prestigious Ross Merrill award which recognizes a museum for its outstanding commitment to the preservation of collections. The award is given jointly by the American Institute for Conservation and Heritage Preservation. The ASM was noted particularly for its outreach efforts to the state for the past 3 decades.



Atwood Foundation Grant to Alaska Veterans Museum

Submitted by Suellyn Wright Novak

The one-year old Alaska Veterans Museum (AVM) recently competed for and won an Atwood Foundation Grant to build and deploy a geographically enabled information system supporting the digitization, display and dissemination of currently available AVM information. The basic system (phase 1) was installed May 8th and 9th, 2012 and allows visitors to touch one of the 271 military sites/posts on the 42" plasma screen and have displayed the geographic coordinates, the service which operated it, when it operated, what its mission was, and how many men/women were stationed there.

Phase 2, which is also almost completely funded, will support digitization of photos, artifacts, and any oral histories the museum has of veterans serving at the sites. Funding is being sought for phase 3 which will place smart pads at local VFWs, American Legions, AMVETs, and Disabled American Veterans Posts for veterans to upload their remembrances of their duty at the sites/bases/posts.

Phases one and two will also be uploaded to the website www.alaskaveterans.com



Paul Gardinier



Since he started working at the Alaska State Museum in 1981, Curator of Exhibitions Paul Gardinier has installed more than 400 different exhibits, from history to art to children's exhibits, from the museum's gallery spaces to smaller cultural institutions across Alaska to immense cruise ship lobbies. Now, after 31 years, he is retiring.

First as exhibits specialist, then as curator, Gardinier, who turns 56 this July, has managed much of the design and technical work involved in presenting exhibits at the Alaska State Museum in Juneau.

For the past two years, he's overseen its temporary exhibition schedule as well as maintaining and upgrading permanent installations of the museum's collection. Gardinier also has served as consultant to other museums throughout the state, giving numerous work-

shops on exhibition techniques and design.

A well-known member of the Juneau arts community, Gardinier is an accomplished artist. A painter and sculptor—he also plays bass clarinet with the Juneau Wind Ensemble—Gardinier plans to devote his retirement to creative pursuits, family and travel.

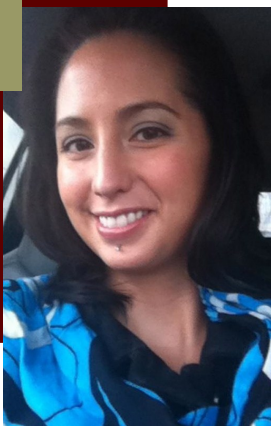
Scott Carrlee notes, “Paul’s artistic talent, ability to create visually stunning shows on a shoe-string budget and his willingness to share his knowledge and tricks of the trade with anyone who would ask will be missed at the museum and throughout the Alaskan museum community. Paul is a true Alaskan ‘Exhibits Guy!’ He learned the trade from the ground floor, brought a renaissance man’s perspective to the job, and understood what we are all up against producing quality exhibits in the Last Frontier. We hope to keep him engaged in the design of the exhibits for the new building.”

C
O
M
M
I
N
G
S
&
G
O
I
N
G
S

Mique'l Dangeli

After serving as the Director of the Duncan Cottage Museum for the past five years, Mique'l Dangeli will focus on completing her PhD in Art History at the University of British Columbia. Mique'l began her position in 2007 during a tremendously devastating time in the museum's history - approximately 40% of its collection was stolen along with nearly all of our collections records. Located in Metlakatla, the Duncan Cottage Museum is the former home of the lay missionary William Duncan (1831-1918). Years of mismanagement left the needs of what little remained in the collection to be severely neglected. Resentment towards Duncan made it

very difficult to gather community support. Without regular hours of operation, public programs, or exhibitions the museum itself had no presence in the community. Born and raised in Metlakatla, Mique'l's objective as Director was to empower her community and culture by reclaiming the museum in a way which supported their healing and embraced who they are as Tsimshian people today. She implemented a new mission and vision that incorporated these goals and hosted community forums to initiate dialogue on the museum's history, its current condition, and possibilities for its future.



Working primarily on her own with the exception of a support staff in the summer, Mique'l assisted in the professionalization of the museum's collection care and management. She is particularly thankful for Scott Carrlee's and recommendations, which helped turn around the organization.

For the Duncan Cottage Museum's grand re-opening of the Duncan Cottage Museum on August 3rd, 2010, Mique'l curated their first Tsimshian exhibition - “*Sigyemsgx: A New Home for Our Culture*.” During the ceremony, a Tsimshian flag was raised outside of the museum and songs and dances were performed inside for the first time in its history. Over the past few years she has organized a host of classes and workshops on Tsimshian culture and Metlakatla history with professionals from Universities across the US and Canada. Most recently, she worked with Margaret Anderson, Professor Emerita at the University of Northern British Columbia and Velna Nelson, fluent *Sm'algayax* (Tsimshian Language) speaker to launch the Duncan Cottage Museum's *Sm'algayax* Language Learning Initiative with a total of fifty-two students. Mique'l is grateful to all those who supported the Duncan Cottage Museum's transformation from an institution that was considered center of Metlakatla's cultural oppression into a place of healing that is truly a home for Tsimshian culture.

Scott Neel

At the end of April, Scott Neel finished his work at the Alaska Native Heritage Center as the grant-funded Curator of Collections and Exhibits. As the funding period comes to a close, he accepted a position with the Department of the Army as Curator / Director of the Fort Sill National Historic Landmark and Museum in Fort Sill, OK in a position that allows him to work with the three local tribes: Comanche, Kiowa and Apache, to tell their story as well as the story of Fort Sill.

His colleague, Eleanor Hadden writes, "While he was here, ANHC was the first to have in LED lights in our Hall of Cultures, he changed the lighting in areas that

needed it, put in museum standard mannequins in our clothing case, put in window film to cut down the natural lights in the Hall of Cultures, put in two humidity controlled cases, put together the grant and logistics of having house posts at our SE clan/longhouse, and he worked closely with 4 artists who carved our four house posts. He did so much more not only for the Heritage Center but for me professionally. As I talked with him about the different Native cultures I know about, he learned quickly and made, if any, a few mistakes while working with us. If he made any, he only made them once. Thank you for all your hard work and dedication to the museum component part of the Alaska Native Heritage Center."

Karen Meizner

Sheldon Museum Collections and Exhibits Coordinator Karen Meizner left the Museum at the end of June to join her husband in Sitka where he is the new medical director for SEARHC Community Health Care Services. Unfortunately due to cuts to the museum's personnel budget, she will not be replaced. Other part-time staff and volunteers will pick up the responsibilities of the position.



Naomi Leask

Naomi Leask is currently a *Sm'algayax* (Tsimshian Language) and cultural education teacher's aide for the Annette Island School District (AISD) in Metlakatla. Born and raised in Metlakatla, she was trained by her grandparents Mel and Ruth Booth, two of the community's last *Sm'algayax* speakers, in traditional subsistence methods and medicines. Naomi has studied Tsimshian art with well-known artist Jack Hudson as well as assisted her clan in many of the potlatches in Metlakatla. She will soon be finishing her Bachelor's Degree in Elementary Education with a minor in Northwest Coast art at University of Alaska Southeast. Her work experience primarily consists of public programs that focus on serving Alaskan Natives. As an intern at the First Alaskans Institute, she worked at the Boys & Girl's club in Metlakatla teaching children World Eskimo-Indian Olympic activities in their summer camp. While attending U of A Southeast, Naomi was a student assistant for the Preparing Indigenous Teachers and Administrators of Alaska Schools program. She's currently teaching *Sm'algayax* and Tsimshian subsistence techniques and technologies in a variety of grade levels throughout AISD as well as Metlakatla's HeadStart program. This year built an extensive traditional garden for AISD with a large variety of plants and medicines that will be used for hands-on learning activities for students of all grade levels.

Naomi's work experience gives her a strong background in facilitating the types of public programs that are essential to supporting the Duncan Cottage Museum's mission to "raise awareness about Metlakatla's unique history as Alaska's only Indian Reserve and to foster the vitality of Tsimshian art, culture, and language in our community now and into the future." After attending the grand re-opening of the Duncan Cottage Museum in 2010, she was inspired to become more active in its public programs. Naomi was a volunteer aide at the Duncan Cottage Museum's *Sm'algayax* Language Learning Initiative in the summer of 2011. This year the Duncan Cottage Museum will be hosting a Tsimshian Plant class where Naomi will be the primary teacher. Focusing on adult education, her students will learn how to identify, harvest, and prepare local plants and medicines as well as their *Sm'algayax* names, nutritional value, and usage. The members of Metlakatla Indian Community, its council, executives, and Mayor are supportive of Naomi taking on the position of Museum Director and are excited to see what she will contribute to this new chapter of its history.





C
O
M
I
N
G
S
&
G
O
I
N
G
S

Holly Cusack-McVeigh

Submitted by Angela Linn, Colleague and Board of Directors, Museums Alaska

Dr. Holly Cusack-McVeigh, Pratt Museum Curator and Collections Manager, has accepted a tenure-track Assistant Professorship of Anthropology & Museum Studies in the School of Liberal Arts at Indiana University Purdue University Indianapolis (IUPUI). She will be leaving her position at the Pratt Museum in July. Holly's appointment also includes collaborative research as an IUPUI Public Scholar of Collections and Community Curation with the Eiteljorg Museum of American Indians and Western Art. The Eiteljorg's Native American art and artifacts come from all regions of North America, from the Southeast to the Arctic. Public Scholarship is a central tenet of the IUPUI Museum Studies Program. Seven members of the faculty in the Museum Studies Department hold the title of Public Scholar.

Holly and her family are not "leaving Alaska." They are the proud owners of a local business and will have a place in Homer to come home to each summer. Holly will continue the collaborative research she has been doing with Alaska Native Tribal organizations and plans to continue working with museums throughout Alaska. During her time at the Pratt, Holly has greatly professionalized the level of care and management of the 24,000+ objects and specimens in their holdings. She has strong ties to many museum professionals in the state of Alaska and has worked diligently to ensure that the Pratt Museum is following established best practices and professional standards of care. In the last year alone, she has accomplished a number of significant collections-based projects, of which I will highlight a few here.

- **NAGPRA:** Holly has been undertaking NAGPRA-based projects since early in her career in Michigan. In addition to her innate understanding of the value of Native perspectives in collections, exhibition, and research, she also has championed the sentiment behind the consultation requirements in NAGPRA and this year brought together five local Dena'ina Athabascan and Sugpiaq Alutiiq tribes to address culturally unidentified ancestral remains that are held by the Pratt. Through this process they collectively agreed to have the remains reburied in the spring of 2012. In addition to the Pratt-based NAGPRA work, Holly has also worked as

volunteer research consultant for a number of Alaska Native and Native American tribes.

- **Mentoring Museum Studies Interns:** Dr. Cusack-McVeigh has combined her excellence and enthusiasm for teaching with respect for practical hands-on learning opportunities and hosted two Museum Studies interns during the summer of 2011. One is now a Museum Studies graduate student in the Arts and Administration Department at the University of Oregon and the other is a PhD candidate in Art History at the University of Denver. Both are returning to Homer for a second collections management internship and will be participating in ten days of fieldwork at Kijik (Kijik National Historic Landmark and Archaeological District, part of Lake Clark National Park and Preserve) for anthropology credits.

- **XRF Training Workshop:** During the summer and fall of 2011, Holly coordinated and facilitated (as well as participated in) two workshops that provided hands-on training for the use of a hand-held X-Ray Fluorescence (XRF) Spectrometer. This new technology is quickly being adopted in museums of all kinds for expanding our knowledge of materials in a non-invasive manner. Holly implemented a program of surveying natural history specimens on exhibit at the Pratt to determine the presence of arsenic, as a way of protecting staff and improving handling procedures. With her new training, she also created a public event for locals to bring in their metallic objects to be tested.

- **Collections Management and Preventive Conservation:** Over the past year, Dr. Cusack-McVeigh has submitted proposals to and received funding from a number of key sources for improving the direct care and management of the diverse collections at the Pratt. These included: a grant from the Alaska Humanities Forum to improve collections care, storage, and safe handling of the Natural History wet collections; Homer Foundation grants to support work that resulted in more accurate and complete methods of computerized data entry (making the transition from ARGUS to PastPerfect), improved registration methods and object documentation; and a grant from the Alaska State Museum for the purchase of a fume hood to protect the working environment of collections staff at the Museum.

In addition to Dr. Cusack-McVeigh's dedication to improving the care of the collections at the Pratt Museum, she is connected to the people of Homer. This year she developed major out-

a

2013 CAP Applications to be released Oct 1, 2012

The 2013 Conservation Assessment Program (CAP) application will become available on Heritage Preservation's Web site at www.heritagepreservation.org on Monday, October 1, 2012. The deadline to submit 2013 applications is 11:59 p.m. on Monday, December 3, 2012. Applications are reviewed on a rolling basis, so museums are encouraged to apply as soon as the application is released.

CAP is a federally-funded program that provides professional conservation assessments for small to mid-sized museums of all types. The program also funds historic buildings assessments for institutions with buildings that are 50 years or older. The assessment process helps museum professionals improve their institutions' conservation policies and procedures, learn conservation and historic preservation best practices, and establish relationships with conservators and historic structures assessors. The resulting CAP report helps museums to develop strategies for improved collections care, long-range planning, staff and board education, and fund-raising. CAP is administered by

Heritage Preservation and supported through a cooperative agreement with the Institute of Museum and Library Services.

Professionals from small and mid-sized museums across the United States have attested to the benefits of CAP. Ellen Anderson, Executive Director of the Oxford Museum in Oxford, Maryland notes that "CAP is an inexpensive investment for valuable and far-reaching conservation advice." Amanda McGuire, Associate Director of Collections at the General Lew Wallace Study and Museum in Crawfordsville, Indiana confirms that "CAP can kick-start fundraising efforts. Our CAP reports inspired our staff and board to successfully complete a \$200,000 capital campaign." Stephanie Lantieri, President of the Avery Memorial Association in Groton, Connecticut praises CAP for "its ability to show funders that the museum follows good practices, while at the same time providing recommendations to improve those practices for the preservation of both collections and historic buildings."

North Pacific RISEnet Regional Workshop

Submitted by Jennifer Arseneau

The University of Alaska Museum of the North is excited to be hosting a workshop presented by the Oregon Museum of Science and Industry. Partners from the "Girls RISE (Raising Interest in Science and Engineering) Museum Network" and "Nanoscale Informal Science Education Network" will present a **free** 2-day workshop for informal educators. The workshop in Fairbanks will include discussions of gender topics and how to design girl friendly learning experiences.

Travel awards are available and typically are up to \$500. However, RISEnet is working on the possibility of raising the cap for this workshop and will update the workshop description with any new details. See the link for more information and to register.

North Pacific RISEnet Regional Workshop, Alaska Edition

October 25-26, University of Alaska Museum of the North
<http://girlsrisenet.org/event/detail/87>

Cusack-McVeigh (continued from page 10)

reach programs to invite the local community to see the value of museums in new ways.

- Fossil Day
- Bone Day
- Treasures or Trinkets
- Caring for Our Community's Collections Series
- Portfolio Making Workshop
- Caring for Your Family's Legacy: Proper Handling and Storage of Historic Photographs

Through these programs, Holly has helped to integrate the Pratt's mission of education and inspiring self-reflection and dialogue into the high standards of col-

lections stewardship that all collections professionals espouse.

I am truly proud to have been a colleague and friend of Holly's for over fifteen years. While I'm sad that I will not be working with her on a regular basis through Museums Alaska and our common anthropological interests, I am extraordinarily proud of her and the accomplishments that have earned her this new, prestigious position at IUPUI. I am sure that she will share the same passion and excitement with her students there, inspiring future generations of museum professionals for years to come.



Heron,
Carole Clifton
Sheldon Museum

*“The survivors
were not allowed
to return to Attu”*

Enjoy Summer Exhibitions Around the State with your 2012 Museums Alaska Membership Card.

.....**RENEW TODAY!**

2012 Exhibits at the Alaska Veterans Museum

Submitted by Suellyn Wright Novak

AVM is marking the 70th Anniversary of the following with new or expanded exhibits:

- The bombing of Dutch Harbor
- The Japanese Invasion of Attu & Kiska
- The loss of the submarine *USS Grunion SS-216*
- The evacuation of the Aleuts to SE Alaska
- The taking of the Attuans to a prison camp on Hokkaido, Japan

In August AVM will take the new bronze plates commemorating Attu Village to the site for installation when the National Park Service's "Lost Villages of the Aleutians" project takes descendants of the Attuans there. The bronze plates replace the badly weathered etched stainless steel plates placed there in 1993 by the

Aleut Corporation. AVM conceived the project, designed the memorial, assembled a consortium to fund it and then designed a collapsible stainless steel cage to protect it from theft, raising more funds for its purchase. Hundreds of hours have been willingly devoted to this project, of which AVM plans to make an international news event. Executive Director Suellyn Wright Novak states "These Attuans were the only North Americans forcibly removed from their homes, transported in the hold of a coal ship and incarcerated in Japan for three years. As almost half of them died in captivity, the survivors were not allowed to return to Attu as there were not enough of them to sustain a village. They too 'served' and are deserving of a permanent memorial. AVM is pleased to lead this project."

Excavate with the Pros!

Submitted by Amy Steffian

Tired of watching Indiana Jones movies on TV? Ready to get some dirt under your fingernails? Put down the remote, pull on your Grundens, and join the Alutiiq Museum for Community Archaeology 2012. It's free and open to all volunteers 14 and up. All you need is a sense of adventure and a sack lunch. We'll take care of the rest.

From July 16 to August 10, 8:15 am to 5:00 pm, we will be working at the Amak Site, a prehistoric camp at the head of Womens Bay. Space is limited. Please contact Danielle Ringer (danielle@alutiiqmuseum.org, 907-486-7004) to reserve a spot. High school and college credit will be available. A volunteer orientation meeting will be held at the museum of July 12th, 7:00 pm. Don't miss this chance to experience the trenches!

New Customs Guide to Alaska Native Art



The guide is a critical resource that answers many frequently asked questions about the legitimate use of various wildlife materials in artwork for sale and includes the most current wildlife law fact sheets available.

The U.S. Fish and Wildlife Service and the Alaska State Council on the Arts collaborated to update and provide this reference publication to meet four public service goals:

Support the conservation and sustainability of Alaska's unique natural resources based on established wildlife management laws;
Ensure visitors that their art piece was legally created, sold and transported and can be safely cherished as a memory of their trip to Alaska;

Strengthen Alaska Native artists and Alaska business owners' ability to support international visitors' patronage of Alaska Native artists and their distinctive work;

Expand the general public's knowledge of the laws that govern the purchase and market transportation of protected wildlife materials.

"helps artists, art patrons, and retailers interpret the complex wildlife laws that affect the international trade of Alaska's most precious commodity"

The U.S. Fish and Wildlife Service and the Alaska State Council on the Arts would like to introduce you to the updated Customs Guide on Alaska Native Arts. Noted as an excellent tool for the Alaska Native art market, the online guide helps artists, arts patrons, and retailers interpret the complex wildlife laws that affect the international trade of Alaska's most precious commodity.

The guide lists wildlife materials commonly used in traditional Alaska Native art. A corresponding table of federal requirements enables residents, visitors, artists, and shops to identify appropriate gifts that may be legally carried home or shipped to various countries.

Go to www.bit.ly/NativeCustomsGuide to view or download the guide. To request a printed color copy of the guide call 1-800-858-7621, email permitsR7LE@fws.gov, or write the U.S. Fish and Wildlife Service at the following address.



U.S. Fish and Wildlife Service

Import Export Office
P.O. Box 190045
Anchorage, AK 99516
Tel: 907-271-6198
Fax: 907-271-6199



Alaska State Council on the Arts

161 Klevin Street, Suite 102
Anchorage, AK 99508-1506
Tel: 907-269-6610
Fax: 907-269-6601



If you would like a hard copy for your gift shop, please contact Chris Andrews at permitsR7LE@fws.gov



Photos courtesy of Sitka Visitors Bureau

Sitka Conference: Oct. 10-13, 2012

Museums Alaska Theme:
Museums Matter: Connecting with Our Communities

Alaska Historical Society Theme:
Alaska on the World Stage

We are looking forward to this year's Joint Annual Conference with the Alaska Historical Society, taking place October 10-13 in Sitka, Alaska.

Registration information is posted on the Alaska Historical Society's website at <http://www.alaskahistoricalsociety.org/index.cfm/conferences/Conference-Information>

For questions about registration, call the Sitka host committee at 907-747-6455

Scholarship applications are at <http://museumsalaska.org/conferences/annual-conference-2012/> **DUE JULY 13th!**

Take an active part in YOUR museum association!

Auction, Elections, Awards...

Take an active part in YOUR museum association by nominating your colleagues for Museums Alaska awards or for the Board of Directors.

We have three openings on the Museums Alaska Board of Directors for the seats of Holly Cusack-McVeigh, Norm Lagasse and former director Diana Martin. You can be a part of shaping Museums Alaska's future!

Board Nomination and Award Nomination forms will be emailed out soon...



Please remember that every museum is expected to bring a piece to the conference for the Silent Auction, to benefit scholarships. Contact us at

auction@museumsalaska.org if you have questions. See details on pages 18-19.

Alice Parman, Keynote Speaker



Alice Parman, Ph.D.

Museum consultant and organizational coach Alice Parman, Ph.D., will be the Museums Alaska keynote speaker for Sitka 2012! The title of Alice's talk will be "Engaging Communities in Exhibit Development," and directly following her keynote address, she will be available for an "Up Close" Q&A session for direct conversations. But before all of that, she will

also be leading a pre-conference workshop on Wednesday, October 10th, entitled "Exhibit Makeovers."

Please join us for an exciting set of opportunities to learn more about working with communities in the exhibit-making process. Check out Alice's website at

<http://aparman.com/>

Flights to Sitka



Alaska Airlines Flights

Arrivals from ANC & JNU
11:18 am or
11:59 pm

Departures for JNU &

ANC 6:00 am or 6:26 pm

To receive a 7% discount on all published fares for travel from any US city between Oct. 6th through Oct. 16th, 2012 use Alaska Airlines code **ECMJ34** when booking online. www.alaskaair.com There is no ticketing fee when booking online, however, a \$15 ticketing fee will apply for bookings made by calling into the Group Desk at 1-800-445-4435. If booking by phone, reference code **MJ34**



Lodging in Sitka

Hotel Housing is available at two sponsored hotels offering conference discount rates of \$99/night. Both Hotels offer full service and are quality sites.

Westmark Sitka-907-747-6241, mention AHS/MA conference when booking.

Rate \$99/night, Double Occupancy. Rate effective 10/8—10/14, 2012

Shee Atika Totem Square Inn-907-747-3693, mention AHS/MA conference when booking.

Rate \$99/night, Double Occupancy. Rates effective 10/8—10/14, 2012

Find listings for additional lodging options at:
www.sitka.org/stay/

North Pacific Hall on the Sheldon Jackson Campus

Alaska Arts SE Campus at Sheldon Jackson, Dormitory style housing (*Private Room / Shared Bath*). 907-747-5940 ask for Philip \$50/room /day

This is a special opportunity for housing on the Historic Sheldon Jackson Campus. The building has been renovated with rooms repainted and furnished with new pillow-top beds.

Info: <http://www.deseretnews.com/article/700144782/Sitka-college-hall-re-opens-after-4-years.html>

Tours

Wednesday October 10th:

4:30 – 7:30 pm Opening Reception Boat Tour

Catamaran Tour of Sitka, Channel, Japanski Island, Causeway , narrated by Marilyn Knapp

Wildlife Viewing: Whales, Sea Otters, Sea Lions

Extensive hors d'oeuvres & refreshments

Thursday October 11th:

Evening dance and music performances

Saturday afternoon, October 13th:

Walking Tour of Sheldon Jackson, SJ Museum, Sitka National Historical Park

Wildlife Tour to Raptor Center, Fortress of the Bear, Sitka Sound Science Center & Hatchery

Guided Walking Tour of Downtown Sitka

Interpretive Bus Tour of Sitka

Sitka Trail Works Guided Tours

1. *Herring Cove Trail & Waterfall*: Rock & Waterfall, End of the Road South, Sawmill Creed Road

2. *Russian History & Forest Mystery*: End of Road North, Halibut Point Road, Old Sitka & Forest & Muskeg Trail

Museums Alaska Sessions Preview

Pre-Conference Workshop – Fundamentals of XRF

Wednesday October 10, 8:30 AM-4 PM

- Bruce Kaiser, Bruker Elemental

Pre-Conference Workshop – Exhibit Makeovers

Wednesday October 10, 1 PM-4 PM

- Alice Parman, Ph.D., Keynote Speaker, Museum Consultant

NAGPRA in Alaska’s Museums *Thursday, October 11, 10 AM-12 PM*

- Moderator: Steve Henrikson, Curator of Collections, Alaska State Museums (ASM)
- Dave McMahan, Office of History and Archaeology, State of Alaska
- Marnie Leist, Registrar, Alutiiq Museum and Archaeological Repository
- Sue Thorson, National Park Service

Filling the Gaps: Educational Programming in Museums *Thursday, October 11, 10 AM-12 PM*

- Moderator: Monica Garcia, Dir. of Education and Public Programs, Anchorage Museum
- Ryjil Christianson, Director of Education, Pratt Museum
- Marie Acemah, Curator of Education, Baranov Museum
- Lisa Golisek, Museum Protection and Visitor Services Manager, ASM

Think BIG! Care of Large Objects *Thursday, October 11, 1:30-3 PM*

- Moderator: Norm Lagasse, Museums Alaska
- Bob Banghart, Chief Curator, ASM
- Jocelyn Young, Curator of Public Art, Municipality of Anchorage
- Richard Beckerman, Museum Consultant

Strengthening Interpretation Through Compelling Stories *Thursday, October 11, 1:30-3 PM*

- Moderator: Scott Carrlee, Curator of Museum Services, ASM

Legal Issues in Collections Management *Thursday, October 11, 3:30-5 PM*

- Presenters from the Office of the Attorney General, State of Alaska

JOIN US

for Hands-On
Pre-Conference
Workshops!

Walking the Leadership Tightrope *Thursday, October 11, 3:30-5 PM*

- Moderator: Patricia Relay, Executive Director, Valdez Museum and Historical Archive
- Patricia Alexander, Board Member, Sitka Historical Society
- Jerrie Clarke, Executive Director, Sheldon Museum & Cultural Center
- Kate Herring, Valdez Communications Manager, Alyeska Pipeline Service Company
- Karen Meizner, former Collections and Exhibits Coordinator, Sheldon Museum & Cultural Center

Up Close with Alice Parman *Friday, October 12, 10AM-12PM*

- Alice Parman, Keynote Speaker, Museum Consultant

XRF in Alaska's Museums *Friday, October 12, 10AM-12 PM*

- Moderator: Angela Linn, Senior Collections Manager, Ethnology & History University of Alaska Museum of the North (UAMN)
- Savanna Bradley, Master's student, Arts Management and Museum Studies, U of O
- Scott Carrlee, Curator of Museum Services, ASM
- Josh Reuther, Northern Land Use Research, Inc. / University of Arizona
- Monica Shah, Director of Collections/Conservator, Anchorage Museum
- Dave McMahan, Office of History and Archaeology, State of Alaska

Exhibits – Soup to Nuts *Friday, October 12 1:30-3:30 PM*

- Moderator: Jackie Fernandez, Curator of Collections and Exhibits, Sitka Historical Society and Museum
- Sarah Asper-Smith and Amy Russell, Beringia Center of Culture and Science
- Jackie Manning, Exhibits Specialist, ASM
- Toby Sullivan, Director, Kodiak Maritime Museum
- Jill Lipka, Exhibits Coordinator, Alutiiq Museum and Archaeological Repository

Using Social Media to Further Your Mission *Friday, October 12 1:30-3:30 PM*

- Moderator: Angela Linn, Senior Collections Manager, Ethnology & History, UAMN
- Theresa Bakker, Media Coordinator, UAMN
- Cassandra Stalzer, Communications Director, Rasmuson Foundation

Q&A on Museum Matters *Saturday, October 13, 9-10:30 AM*

- Scott Carrlee, Curator of Museum Services, ASM

... and, of course, **AFTERNOON TOURS!!!**



Museums Alaska Conference Silent Auction Round-Up Sitka, Alaska, October 10-13, 2012

The Museums Alaska Board is currently coordinating our annual 2012 conference silent auction. The Museums Alaska auction is a vital fundraising tool that helps us continue to provide scholarships for individuals to attend yearly conferences.

Auction item donations from every museum will allow us to continue to offer conference scholarship opportunities. Personal donations are also welcome.

CONTACT US TODAY

auction@museumsalaska.org

Contact Jane Lindsey, auction coordinator
with questions and for donation forms.

DONATION IDEAS

What's in your closet? A treasure appreciated by you AND all your museum friends?

Gift shop inventory 🌀 Artwork 🌀 Vintage Books and Magazines

🌀 Excursions

Service Packages 🌀 Jewelry 🌀 Prints

🌀 Collectibles 🌀 Theme baskets

Contact auction coordinator Jane Lindsey for more ideas and the details of your bringing your donation to Sitka.



Silent Auction Donation Form

Please email a copy of this form (or this information) to auktion@museumsalaska.org by September 30, 2012

(Contact) Name/Institution: _____

Address: _____

Phone: _____

Email: _____

Description AND SIZE of Item(s):

Estimated Value: _____

Minimum Bid: _____

If you can't bring an item (or even if you can!) donations to the Donna Matthews Professional Development Fund are always appreciated and ensure that we can offer conference scholarships each year.

I will bring my item to the conference silent auction set-up area (TIME/DATE):

I would like to donate directly to the scholarship fund

My check is enclosed payable to Museums Alaska Scholarship Fund

Charge my card

Cardholder's Name: _____

Credit Card # _____ Expiration Date _____

Contact: Jane Lindsey, SILENT AUCTION COORDINATOR WITH QUESTIONS at
AUCTION@MUSEUMSALASKA.ORG

Mail checks to Museums Alaska, PO Box 3004, Homer, AK 99603



The Statewide Museum Association

PO Box 3004

Homer, AK 99603

tel. 907.306.3409

www.museumsalaska.org

email: director@museumsalaska.org

The mission of Museums Alaska is to maintain an association of Alaska's museum professionals and volunteers in order to provide opportunities for improvement of museum and culture center services in Alaska and to enhance public understanding of the purposes and functions of Alaska's museums and culture centers.

Museums Alaska Launches New Website!



MA website. The new format is nimble and changeable, as the needs of our members change. We'd like to hear your suggestions, so don't hold back! Please send any comments to:

director@museumsalaska.org

or take the online survey. In blog format, there's a place to post a project or look for ideas from your clever museum colleagues, so

INSPIRE us with your programs, projects and innovative solutions to our common Alaskan challenges.

Have you checked out the new Museums Alaska website yet? Launched on International Museum Day, the homepage currently features a slideshow of images submitted by museums around the state. The Alaska State Museum collected all images taken on a single day, May 1, 2012 and collaborated with Museums Alaska to simultaneously open a live exhibit in the ASM gallery and online exhibit on the



Museums Alaska is also on facebook, another place to join the conversation.



Visit us soon at
[www.museumsalaska.org!](http://www.museumsalaska.org)